

Copy Property Training

Copy Property_Training.zip



Copy Property - Overview

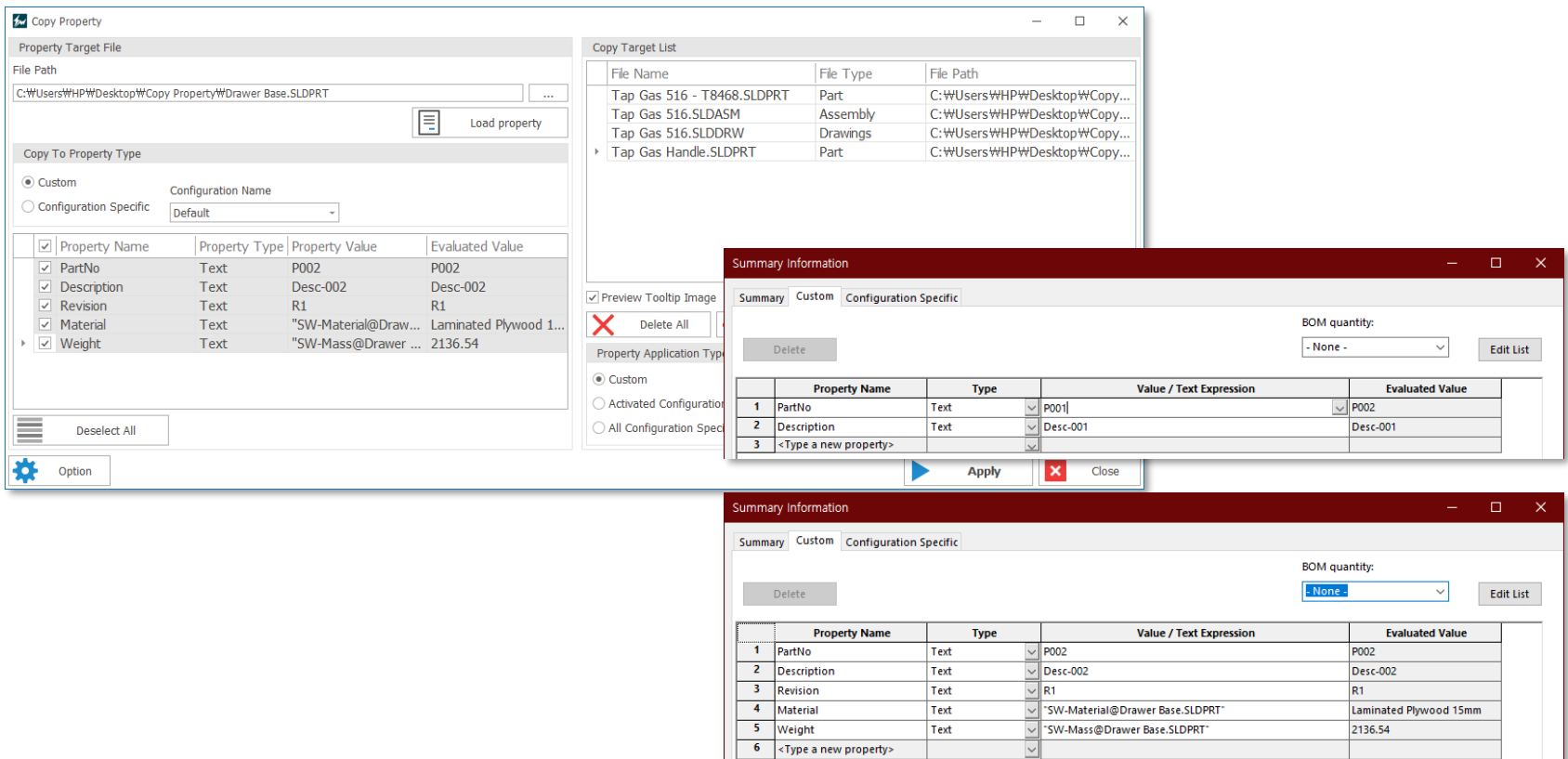
Main Functions

- Copy model properties in bulk to a large number of file model properties
- Custom Properties and Settings Copy Select Specific Properties
- Copy properties between parts, assemblies, and drawings

Benefits

- Properties can be entered into a large number of files, reducing work time
- It can be managed with standardized attribute information, enabling the establishment of a design process.

 **Course Objective: Follow the simple step-by-step instructions and learn how to use Copy Property.**



The image shows the 'Copy Property' dialog box and two 'Summary Information' windows. The 'Copy Property' dialog box has a 'Property Target File' section with a file path and a 'Copy To Property Type' section with radio buttons for 'Custom' and 'Configuration Specific'. Below these is a table of properties to be copied.

Property Name	Property Type	Property Value	Evaluated Value
PartNo	Text	P002	P002
Description	Text	Desc-002	Desc-002
Revision	Text	R1	R1
Material	Text	"SW-Material@Draw...	Laminated Plywood 1...
Weight	Text	"SW-Mass@Drawer ...	2136.54

The 'Copy Target List' window shows a table of files to be copied to:

File Name	File Type	File Path
Tap Gas 516 - T8468.SLDPR	Part	C:\Users\WHP\Desktop\WCopy...
Tap Gas 516.SLDASM	Assembly	C:\Users\WHP\Desktop\WCopy...
Tap Gas 516.SLDDRW	Drawings	C:\Users\WHP\Desktop\WCopy...
Tap Gas Handle.SLDPR	Part	C:\Users\WHP\Desktop\WCopy...

The 'Summary Information' window shows a table of properties to be copied to:

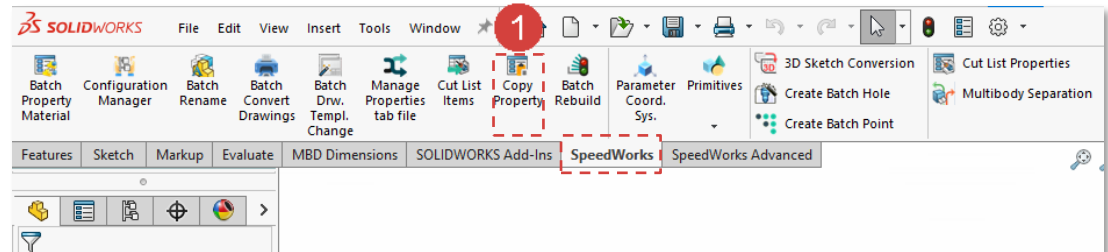
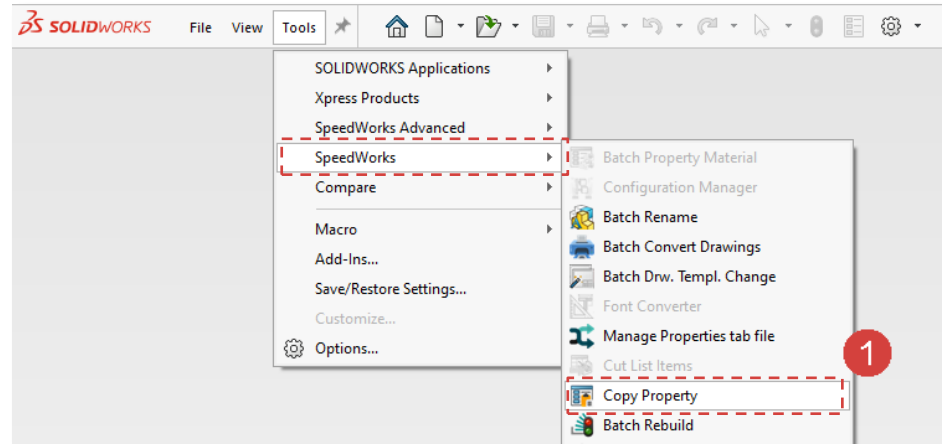
Property Name	Type	Value / Text Expression	Evaluated Value
1 PartNo	Text	P001	P002
2 Description	Text	Desc-001	Desc-001
3 <Type a new property>			

The 'Summary Information' window also shows a 'BOM quantity' dropdown menu set to '- None -' and an 'Edit List' button.

Copy Property - Execute

- 1 Click **SOLIDWORKS – [Tool] tab - [SpeedWorks]** - **[Copy Property]** to execute function.

or in Part/Assembly/Drawing files click **[SpeedWorks]tab - [Copy Property]** to execute function.



※ You can download example files at Support page in SpeedWorks Homepage(<https://speedworks.info>).

Work on the part with the red circle (1) following instructions by yourself.
The part with the black square (1) is an additional explanation or a reference.

Copy Property - Property Target File Add

Work on the part with the red circle (1) following instructions by yourself.
The part with the black square (1) is an additional explanation or a reference.

1 Click to [...].

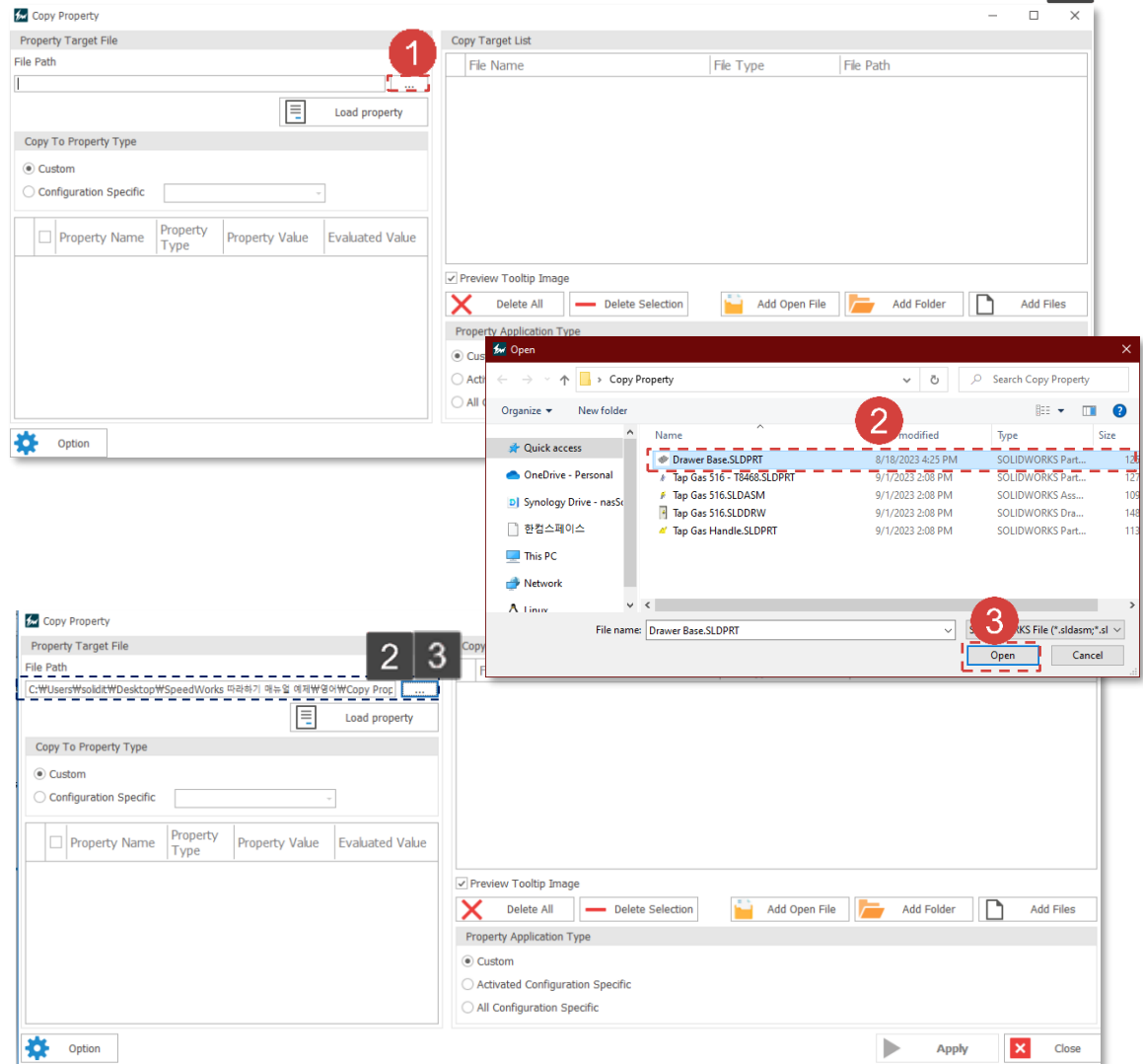
2 Select '**Drawer Base.SLDPR**' file among the sample files.

3 Click **[Open]** button to add file.

1 This is Copy Property screen.

2 It is file added list.

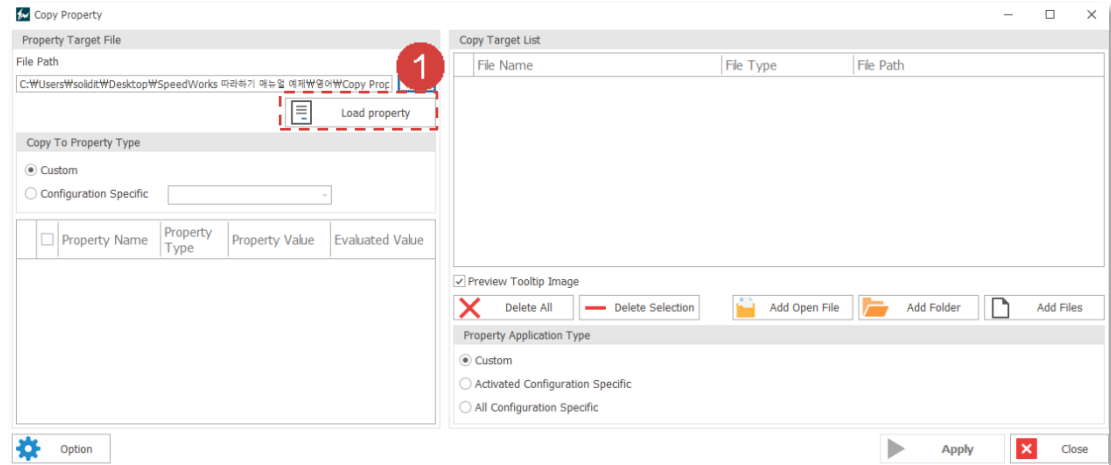
3 Part, assembly, and drawing files can be used as property target files.



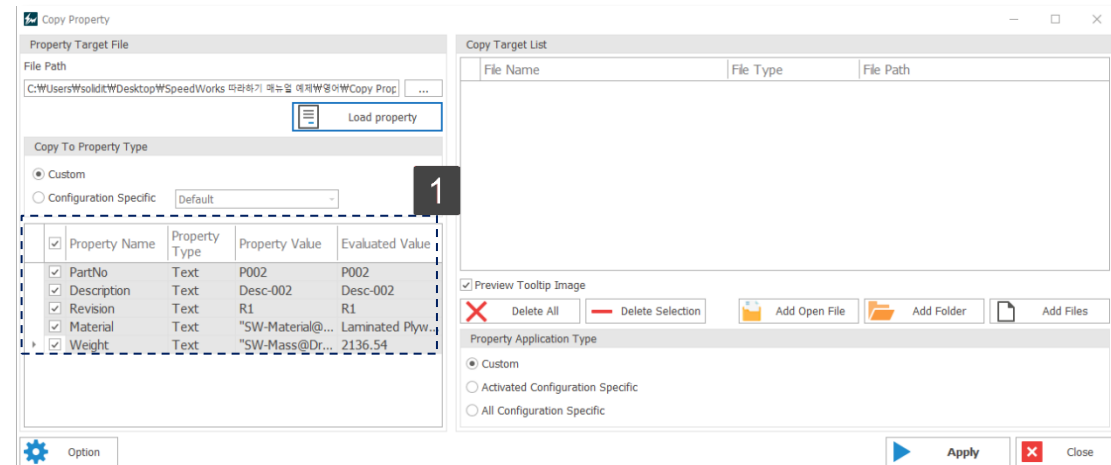
Copy Property - Load Property

Work on the part with the red circle (1) following instructions by yourself.
The part with the black square (1) is an additional explanation or a reference.

1 Click to [Load property].



1 Property loading has been completed.



Copy Property - Select Property


Work on the part with the red circle (1) following instructions by yourself.
The part with the black square (2) is an additional explanation or a reference.

- 1 Select the [Copy To Property Type] – [Custom].
- 2 Select the 'PartNo', 'Description', 'Revision', 'Material', 'Weight'.

1 User can select the type of property you want to copy.


2

If user select Configuration Specific, you can recall the desired configuration properties by selecting [Configuration Name].

 Copy Property

Property Target File


File Path
C:\Users\solidit\Desktop\SpeedWorks 따라하기 메뉴얼 예제\영어\Copy Prop ...

 Load property

Copy To Property Type 1

☒ Custom 2
☐ Configuration Specific Default

<input checked="" type="checkbox"/>	Property Name	Property Type	Property Value	Evaluated Value
<input checked="" type="checkbox"/>	PartNo	Text	P002	P002
<input checked="" type="checkbox"/>	Description	Text	Desc-002	Desc-002
<input checked="" type="checkbox"/>	Revision	Text	R1	R1
<input checked="" type="checkbox"/>	Material	Text	"SW-Material@...	Laminated Plyw...
<input checked="" type="checkbox"/>	Weight	Text	"SW-Mass@Dr...	2136.54

 Option

Copy Property - Add Copy Target Files

Work on the part with the red circle (1) following instructions by yourself.
The part with the black square (1) is an additional explanation or a reference.

- 1 Click **[Add Files]** button.
- 2 Select 'Tap Gas 516 - T8468.SLDPRT', 'Tap Gas 516.SLDASM', 'Tap Gas 516.SLDDRW', 'Tap Gas Handle.SLDPRT' files among the sample files.
- 3 Click **[Open]** button to add file.

1 Part, assembly, and drawing files can be used as copy target files.

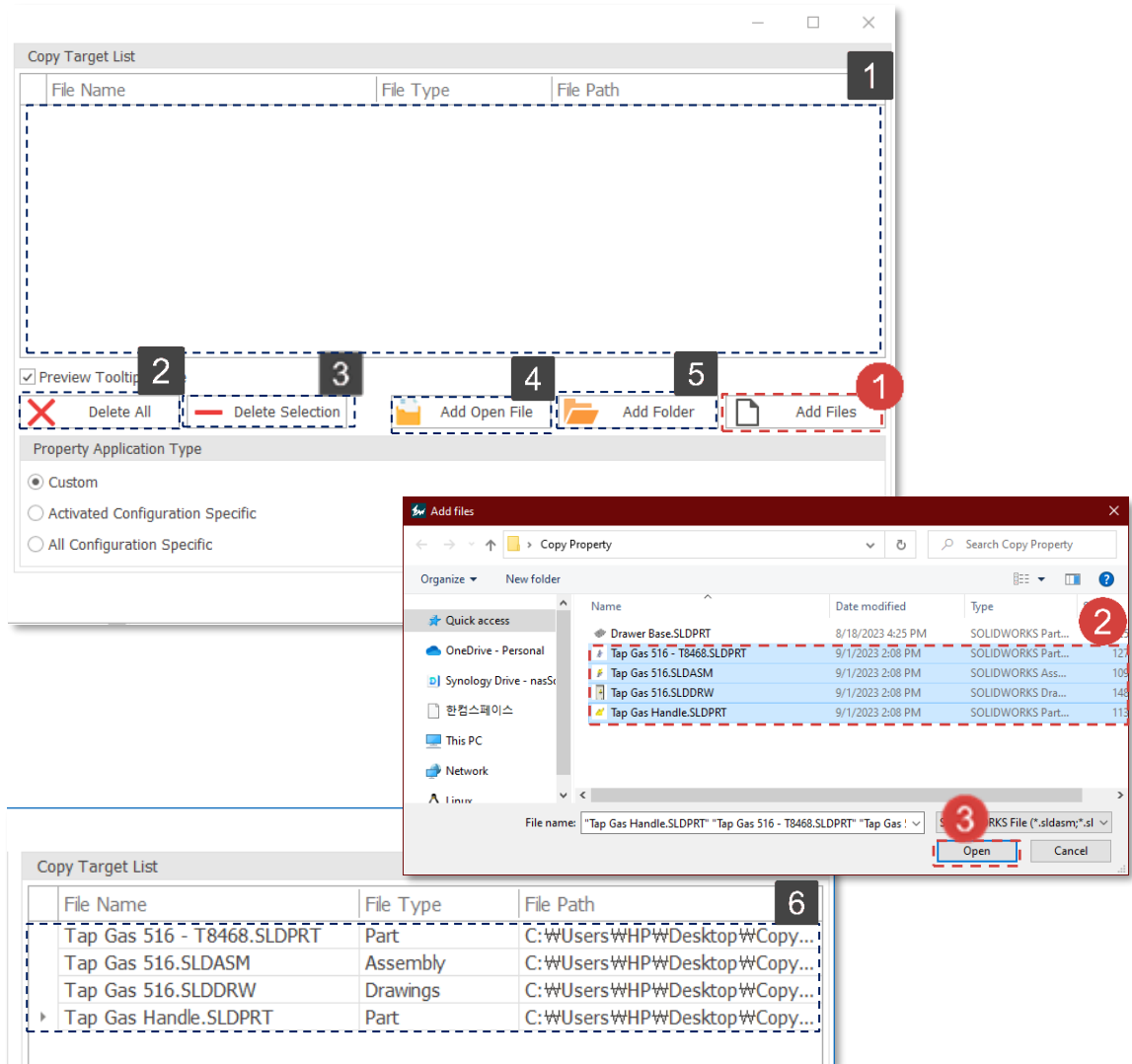
2 User can delete the entire copy target list using the **[Delete All]** button.

3 User can delete selected items using the **[Delete Selection]** button.

4 User can add an open drawing file to SOLIDWORKS using the **[Add Open File]** button.

5 User can use the **[Add Folder]** button to add SOLIDWORKS part, assembly, and drawing files within the folder.

6 File addition has been completed.



Copy Property - Option Setting

Work on the part with the red circle (1) following instructions by yourself.
The part with the black square (1) is an additional explanation or a reference.

- 1 Click **[Option]** button.
- 2 Select the **[Property Value Type]** - **[Input Value]**.
- 3 Select the **[Duplicate Property Setting]** - **[Overwrite Existing Property]**.
- 4 Click **[OK]** button.

1 This is Option screen.

2 User can specify the type of properties value to copy.

3 User can specify what to do if identical properties exist in the files to be copied.

<input checked="" type="checkbox"/>	Property Name	Property Type	Property Value	Evaluated Value
<input checked="" type="checkbox"/>	PartNo	Text	P002	P002
<input checked="" type="checkbox"/>	Description	Text	Desc-002	Desc-002
<input checked="" type="checkbox"/>	Revision	Text	R1	R1
<input checked="" type="checkbox"/>	Material	Text	"SW-Material@...	Laminated Plyw...
<input checked="" type="checkbox"/>	Weight	Text	"SW-Mass@Dr...	2136.54

Option 1

Option

Property Value Type

☒ Input Value 2

☐ Evaluated Value

Duplicate Property Setting

☒ Overwrite Existing Property 3

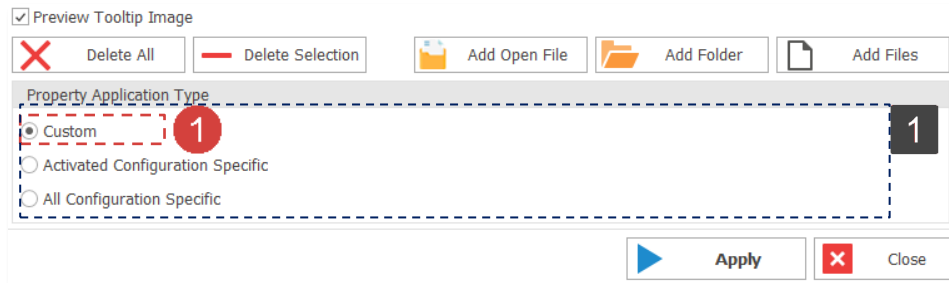
☐ Exclude Duplicate Property

4 ☒ OK ☐ Close

Copy Property - Select Property Application Type

Work on the part with the red circle (1) following instructions by yourself.
The part with the black square (1) is an additional explanation or a reference.

1 Select the **[Property Application Type]** - **[Custom]**.

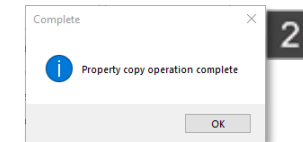
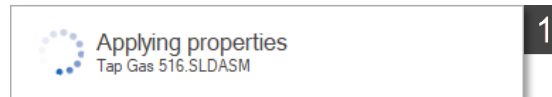
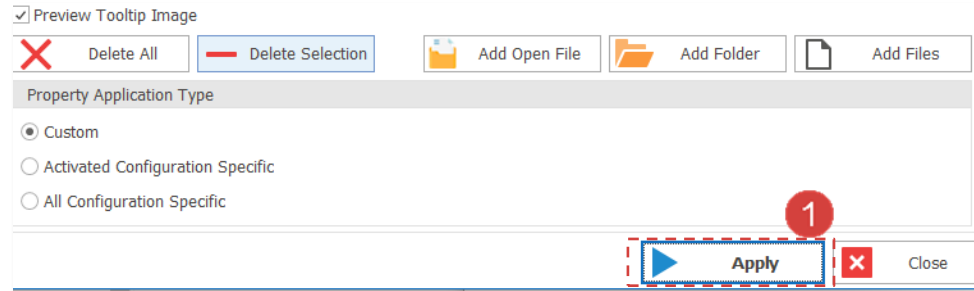


1 You can specify the enforcement type of the properties you want to copy.

Auto Barcode Insert - Insert Barcode

Work on the part with the red circle (1) following instructions by yourself.
The part with the black square (1) is an additional explanation or a reference.

1 Click the **[Apply]** button.



1 User can check the progress.

2 When the operation is complete, a completion message window appears.

3 State before copying properties

4 Status after copying properties

